

MAY 16 2022

Approved

#200,000-

American Rescue Plan Project Submission Form**Project Name** - *A short name for your project, such as "Sewer Line Expansion along Main St."***Client Services Expansion Project****Primary Point of Contact** - *The name and contact information for the person in your organization that should be contacted first about this project for more details.*

Jennifer Woods, Executive Director. 349 NW Renfro St. Burleson, TX 76028
 817-295-6252, office. 817-689-7970, cell
 jennifer@yourharvesthouse.org

Project Description - *A description of your project or item for purchase in 250 words or less, including why the project is needed and how that need will be met*

Harvest House must expand our facilities to meet the demand created by the pandemic. Due to limited space, we cannot accommodate clients in the building as before. When the pandemic started, we were forced to move from in person, choice shopping, to drive thru food services. This also limited how we provided clothing and necessities in our clothing store. We must plan to meet our community needs in a personalized and safe manner as the endemic continues. The community has rallied and provided more donations than ever before. In fact, we have received more gifts in the past 2 years than ever. Storage is a major issue. We are renting containers to hold all the food and clothing we cannot bring into our small warehouse. Additionally, we have no private space to meet with clients. There is a need for various kinds of education and support that we cannot provide due to a lack of space to hold classes. We have seen an increase in clients needing more employment resources to transition into new career opportunities to create stability. With these funds we would be able to expand our client services, storehouse, and education areas to help people get back to work. It would enable us to stop turning away food and other donations due to storage issues. This will help us help clients make permanent, long-term changes.

Project Location - *Where your project will be performed, such as "500 feet along Main Street". Include maps, if available.*

This project will take place in multiple spaces. First, the expansion of our resale shop across the street to 101 NE Wilshire Blvd., Burleson, will receive food overflow and household and clothing items. Second, out of our existing space at 349 NW Renfro St. Burleson, TX 76028, we will create one-on-one client services, office spaces, educational space, and expanded warehouse/grocery store. The map included shows the proximity of the two locations.

Project Budget - *A rough estimate of the budget required for your project.*

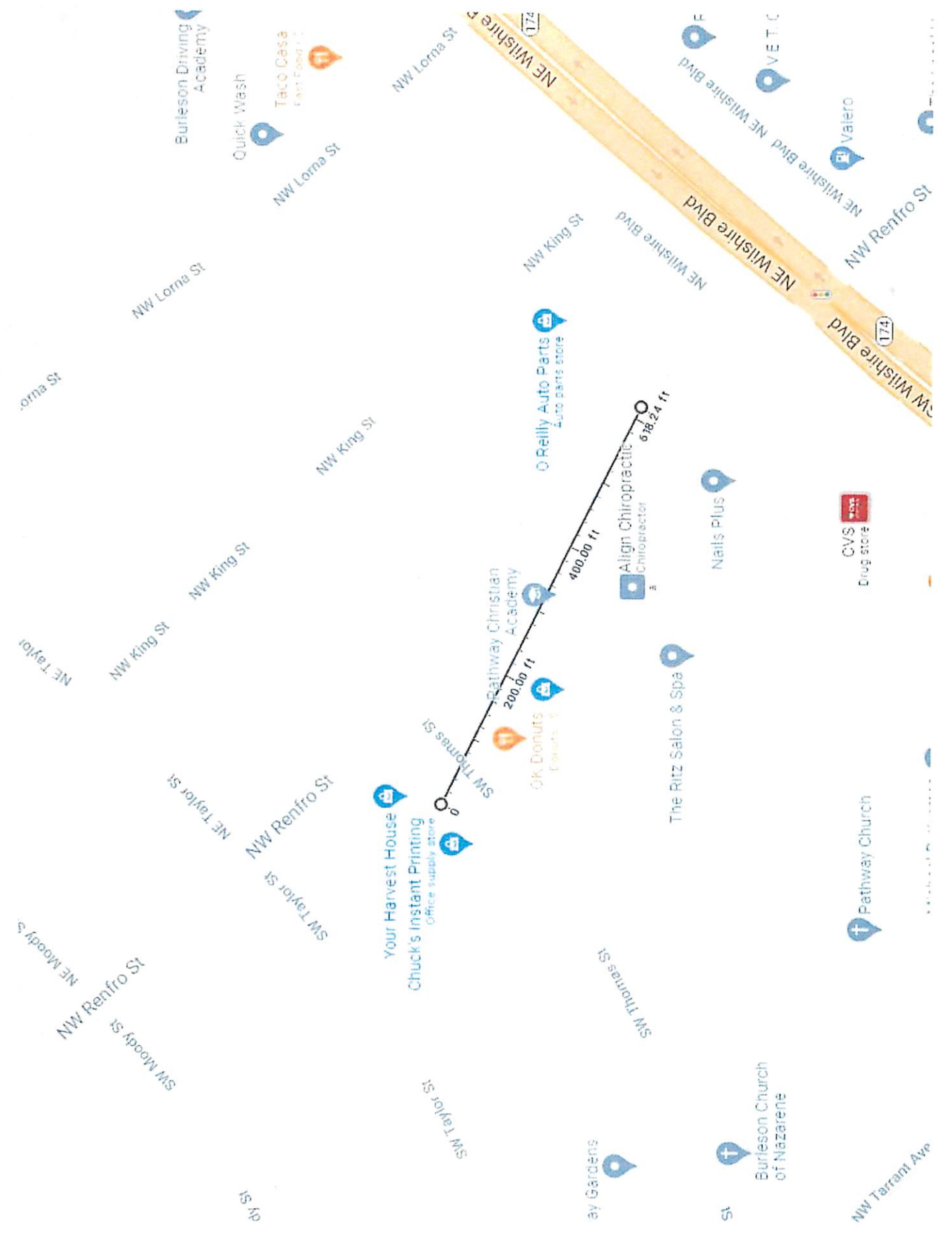
\$200,000: 101 NE Wilshire Blvd, Burleson, TX 76028. Create overflow warehouse and Storehouse space; ADA bathroom, create food warehouse and donation space for all in kind donations (clothing, food, etc.). (Itemization available if needed).

\$1,000,000: 349 NW Renfro St. Burleson, TX 76028. Renovate existing space, (move walls, paint, fix building leaks, bring electrical and plumbing up to current code, and building up to ADA standards, create education space, add walk in refrigerator to accept more fresh items). Add an additional box truck, new signage, Moving the Resale store will allow us to provide more space to distribute free clothing and furniture to those starting over and allow us to accept more fresh and frozen foods that we currently turn away.

Project Timeframe - *An estimate of how long it will take to start the project, how long the project will*

take to complete, and how long it will take to expend all funds related to the project.

This project will begin immediately. Phase 1 to be completed no later than August 1. Phase 2 (349 NW Renfro) may possibly be done concurrently as the warehouse space in the new location is completed. Phase 2 will be completed 18-24 months post award.



Burleson Driving Academy

Quick Wash

Taco Casa
Fast Food T.C.

Your Harvest House

Chuck's Instant Printing
Office supply store

Pathway Christian Academy

OK Donuts
Donuts

O'Reilly Auto Parts
Auto parts store

Align Chiropractic
Chiropractor

The Ritz Salon & Spa

Nails Plus

CVS
Drug store

Pathway Church

Burleson Church of Nazarene

NW Tarrant Ave

NW Lorna St

NW Lorna St

NW Lorna St

oma St

NW King St

NW King St

NW King St

NE Taylor

NE Taylor St

NW Renfro St

SW Taylor St

NW Renfro St

SW Moody St

SW Taylor St

SW Thomas St

NE Wishire Blvd

NW King St

NE Wishire Blvd

NE Wishire Blvd

NW Renfro St

SW Wishire Blvd

E

V.E.T.C.

Valero

ay Gardens

St

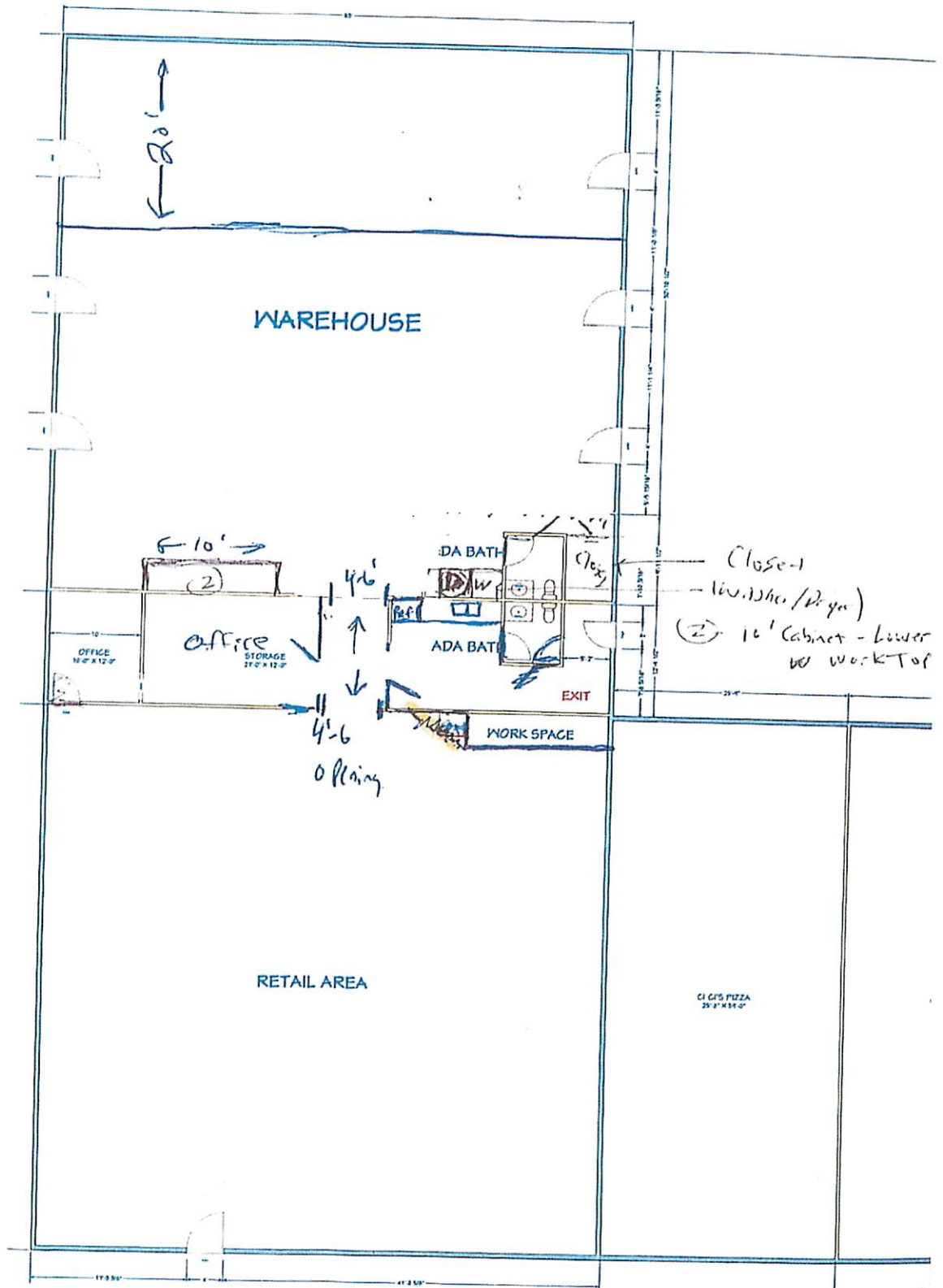
200.00 ft

400.00 ft

678.24 ft

172

174



WAREHOUSE

20'

10'

OFFICE
10' x 12'

OFFICE STORAGE
20' x 12'

RETAIL AREA

CIG'S PIZZA
25' x 35'

ADA BATH

ADA BATH

EXIT

WORK SPACE

Closet

Closet
- 10' x 12' (Dry)
(2) 10' Cabinet - Lower
w/ work Top

4'-6"
↑
↓
4'-6"
Opening

Rachel Sitrler

From: Jennifer Woods <jennifer@yourharvesthouse.org>
Sent: Thursday, January 27, 2022 1:46 PM
To: kevin.dyer@grantworks.net; County Judge (public address)
Cc: Jennifer Woods
Subject: American Rescue Plan submission for Harvest House-Burleson
Attachments: DOC012422-012422-006.pdf; ARPAFundingCoverLetterForm.pdf; Harvest House-Resale.Pantry Expansion Map.pdf

Some people who received this message don't often get email from jennifer@yourharvesthouse.org. [Learn why this is important](#)

*** External sender - use caution with links or attachments ***

Dear Mr. Dyer and Judge Harmon,

Please find attached, the grant application for Harvest House. Let me know if there are questions or concerns. We are excited about this opportunity, should we qualify. Thank you for your consideration.

Jennifer Woods
Executive Director
349 NW Renfro Burleson, TX 76028
O 817-295-6252

www.yourharvesthouse.org

